



C. Vogt, del.

Ledeux, imp.

G. Nugent, lith.

Velella spirans Forskal.



C. Voigt del.

Leclercq imp.

C. Nugent Lith.

Velella spirans. Forskal.



C. Vign. del.

Ledoux imp.

A. J. Goussier lith.

Physophora hydrostatica Forskal.



C. Vogt del.

Leidova imp

C. Nagel Lith.

Physophora.



C. Vogt, del. Ledoux, imp. Nugent, lith.

Physophora hydrostatica Forskal.



C. Vogt del.

Lederer imp.

C. Nagant Lith.

Physophora.

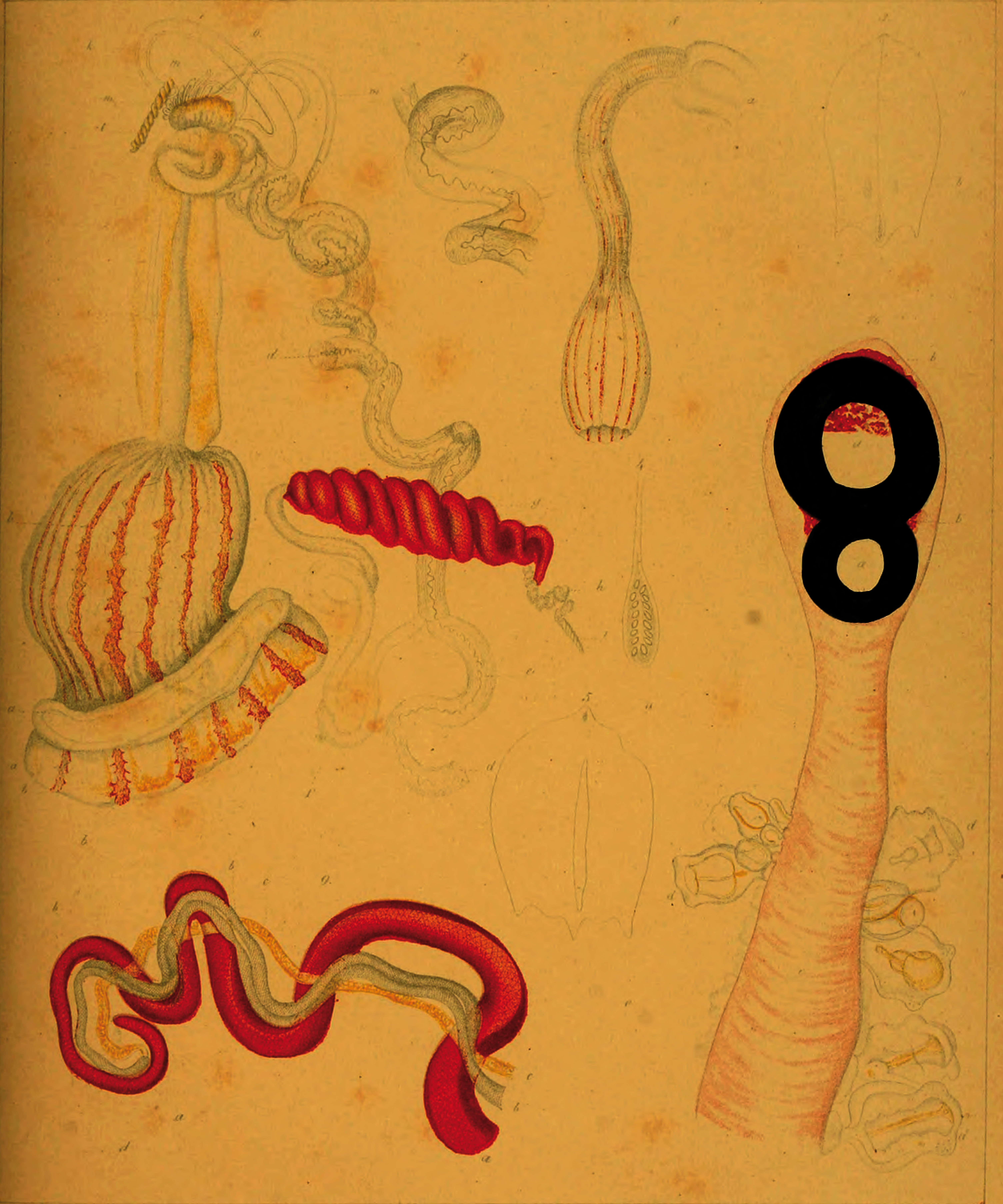


C. Voigt del.

1843

Agalma rubra

Agalma rubra - C Voigt.



C. Vogt del.

L. de Meunier sculp.

G. Zinnig sculp.

Agalma rubra.

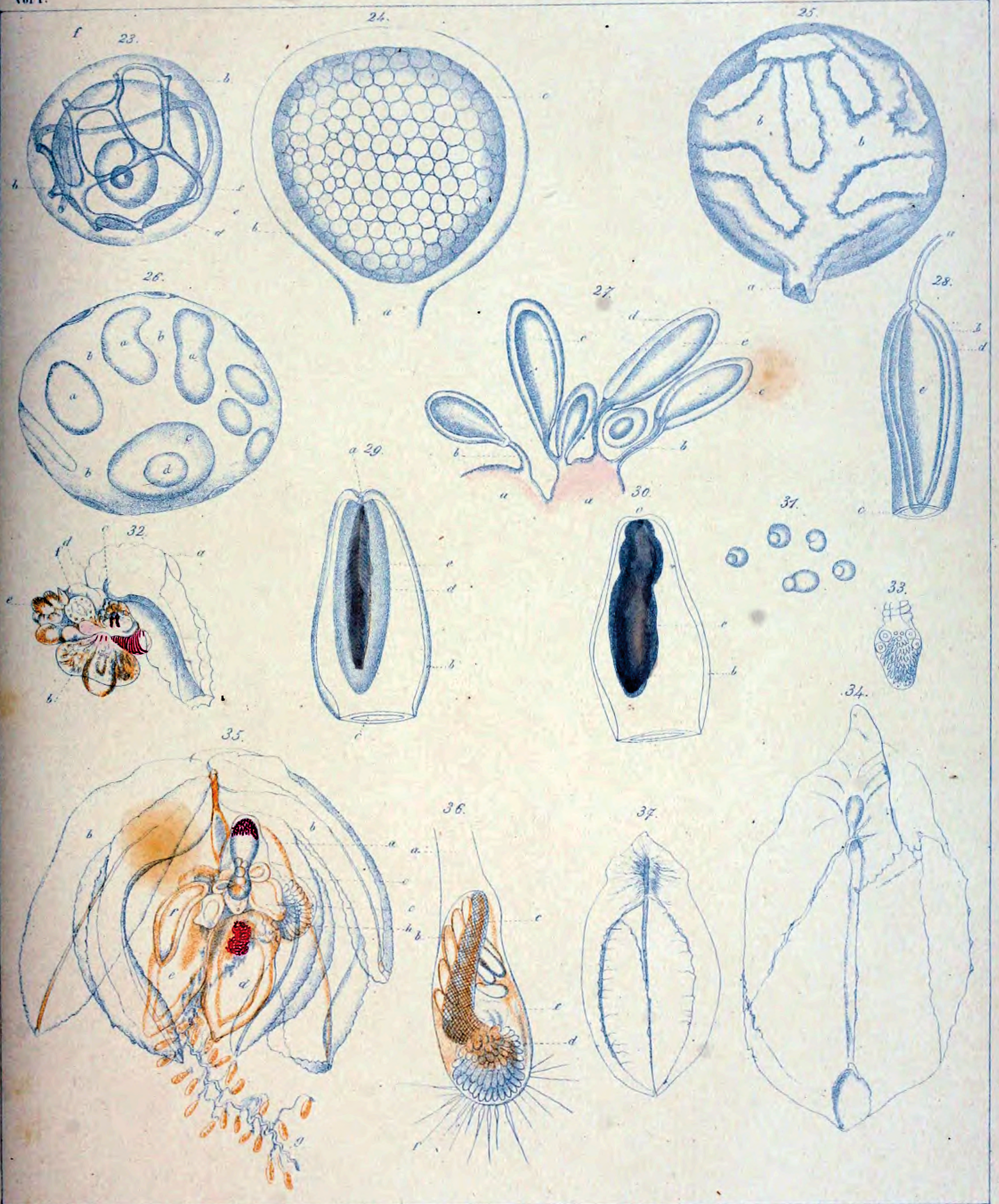


C. Vogt del.

Lecolux imp.

G. Nugent lith.

Agalma rubra.

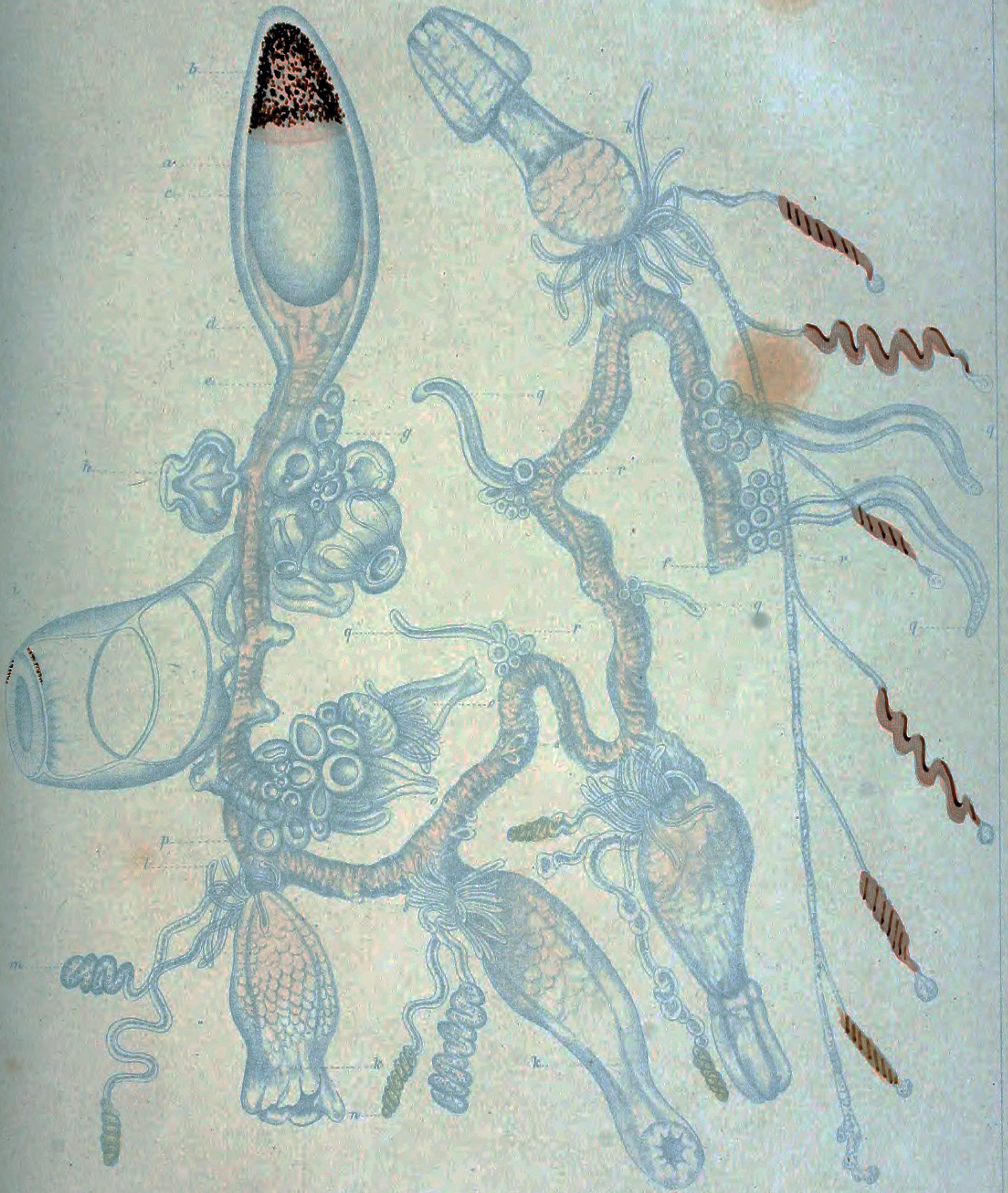


C. Vogel del.

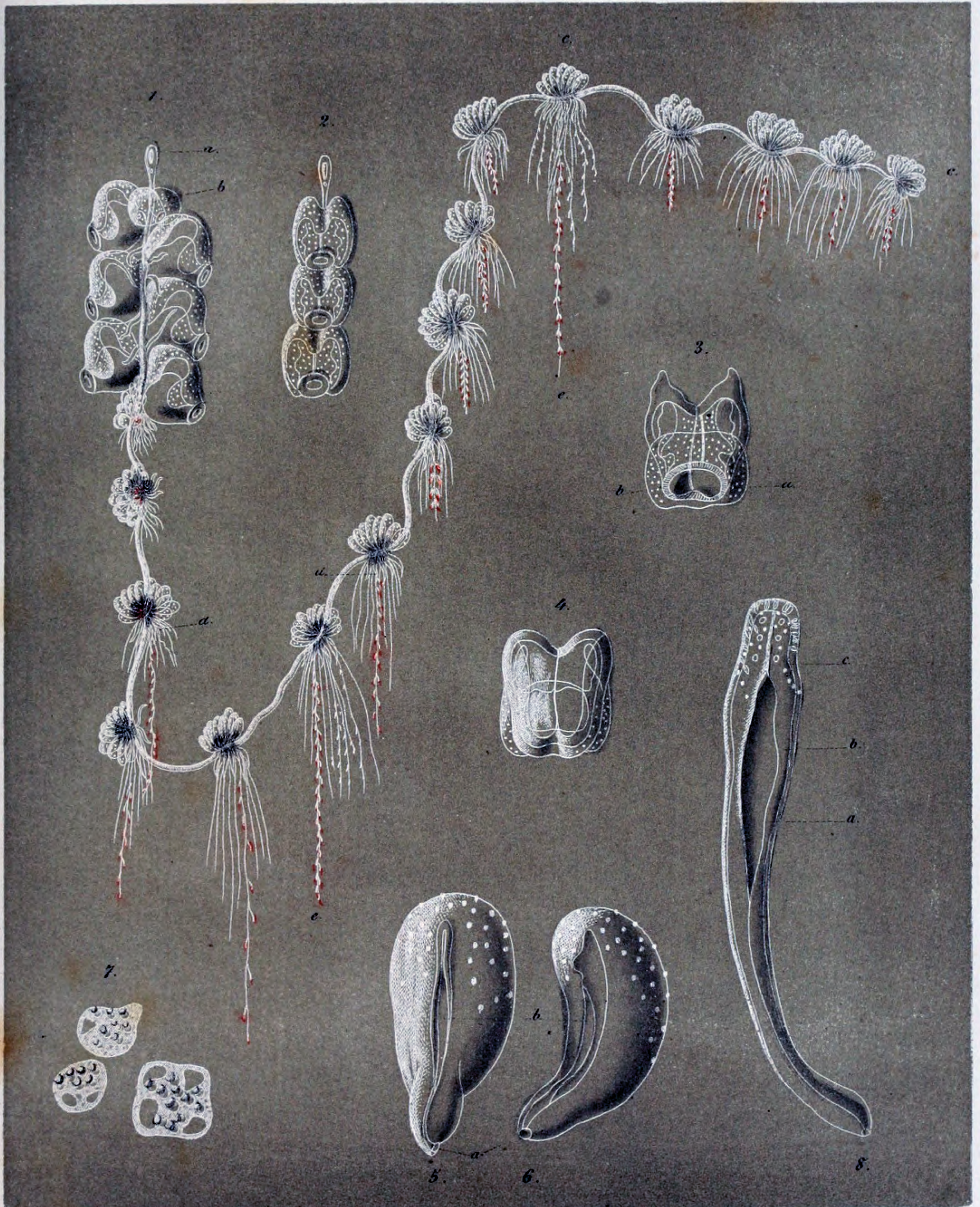
L. Cuvier imp.

G. Nuyssent lith.

Agalma rubra.



Agalma rubra. C. Vogt.

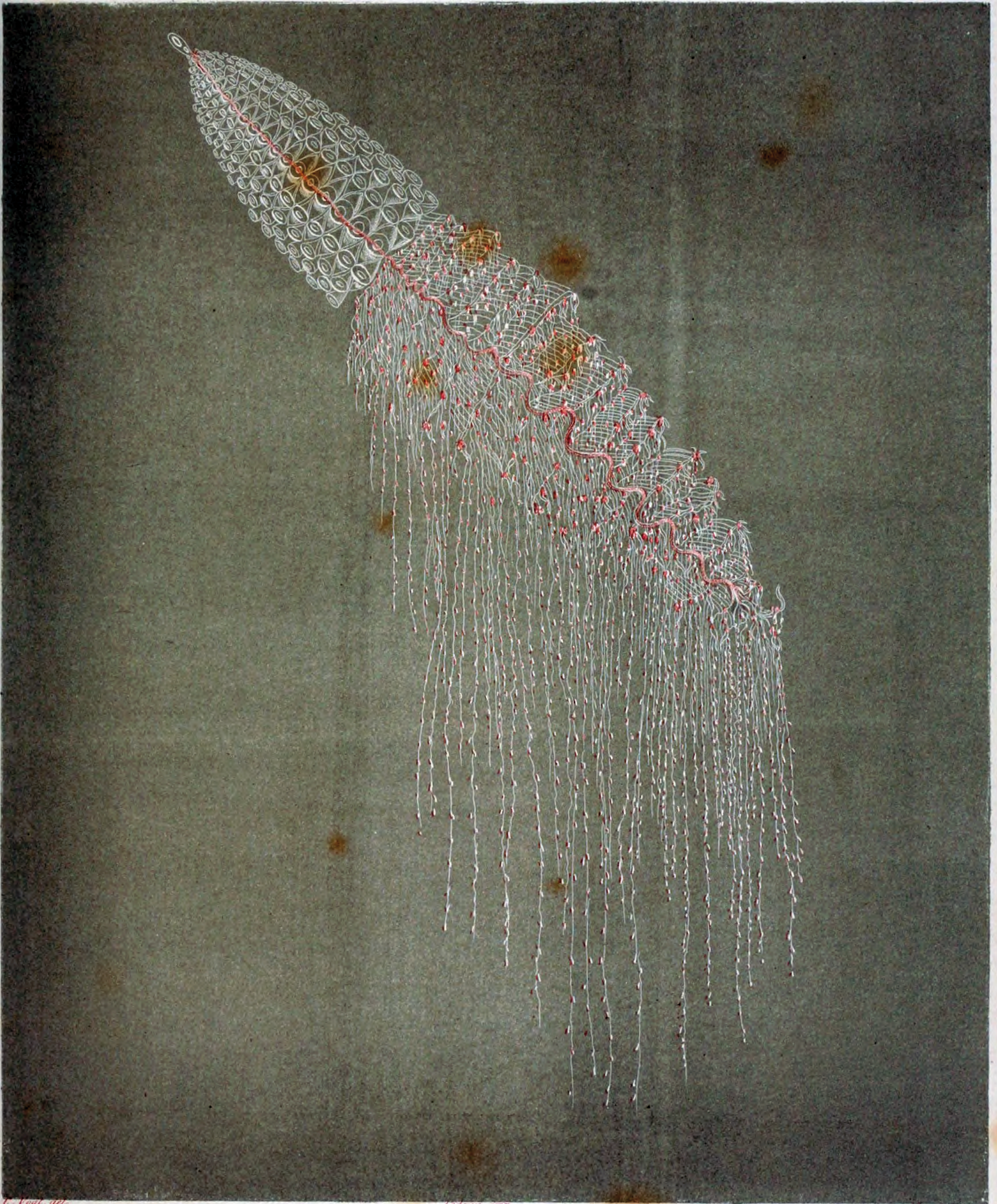


C. Voigt, del.

Ledoux, imp.

Nugent, lith.

Agalma punctata. C. Voigt.



C. Vogt, del.

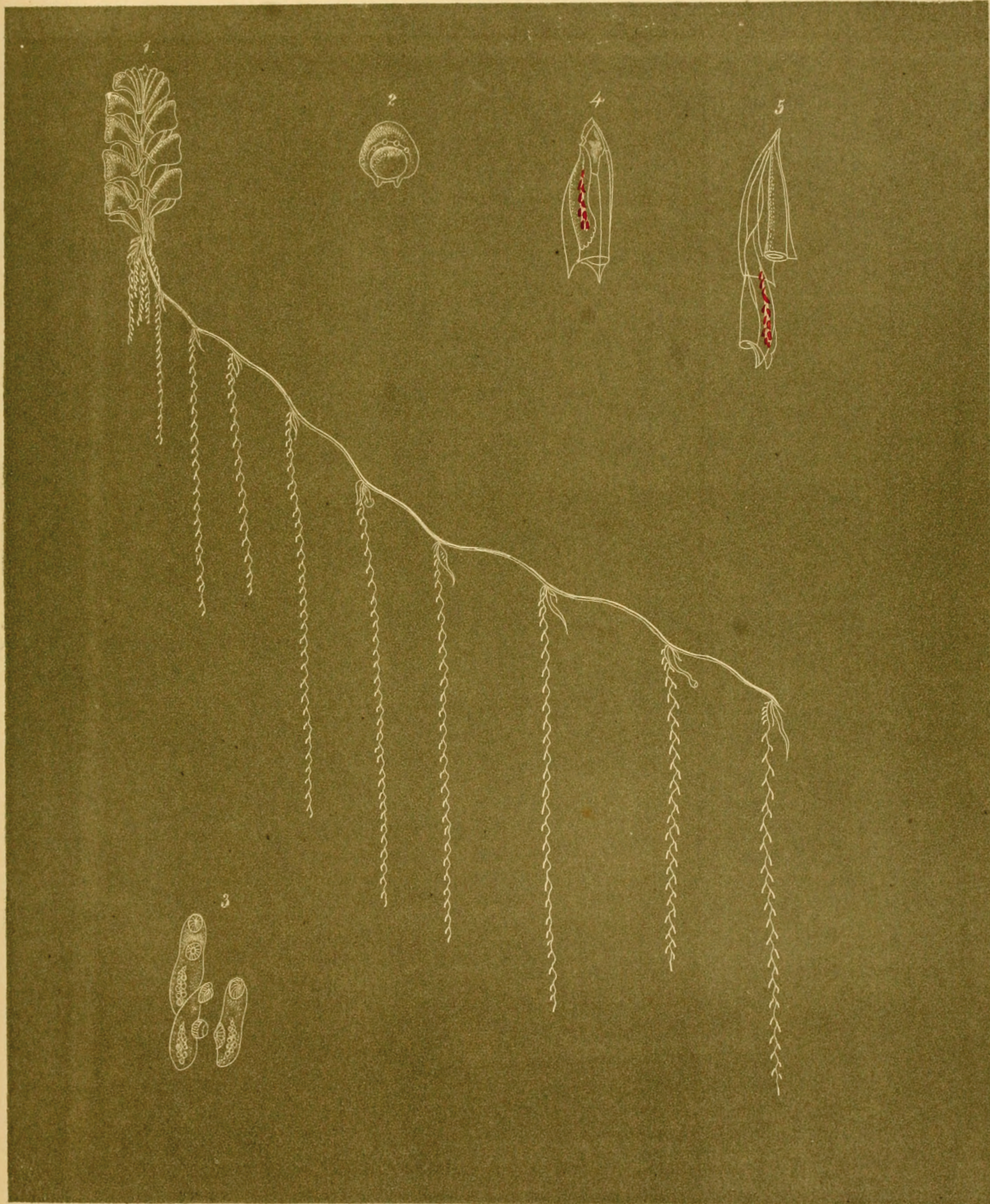
Hedera, imp.

Argent. 114.

Apolemia contorta. C. Vogt.



1-6. *Apolemia contorta*. 7-12. *Hippopodius luteus*.

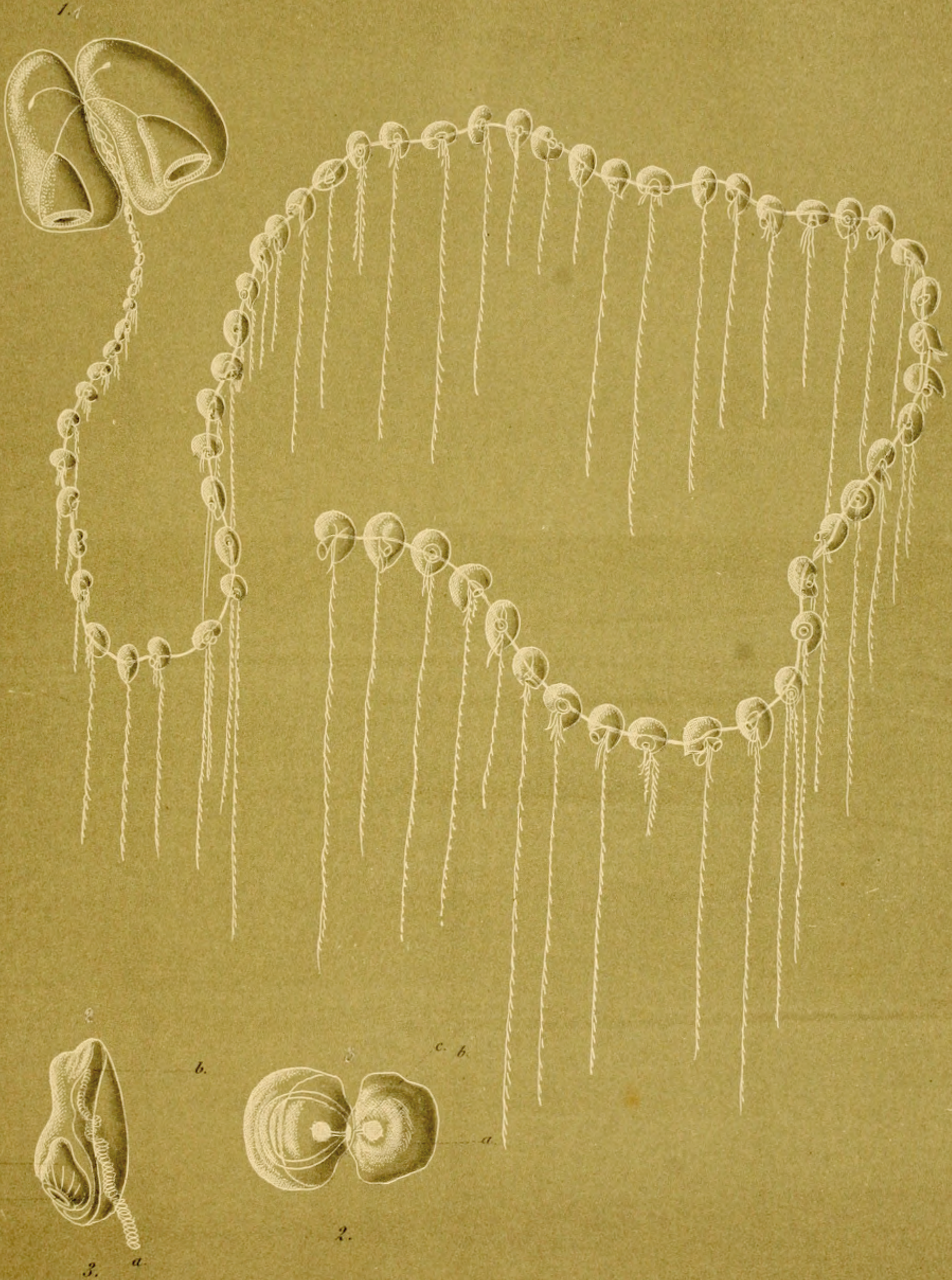


C. Vogt del.

Lodona imp.

Vogel Lith.

1.-2. Hippopodius luteus. Quoy et Gaim. 3.-Distomum Hippopodii. C-Vogt.
 4.-Abyla trigona. Q. et G. 5.-Diphyes spec?

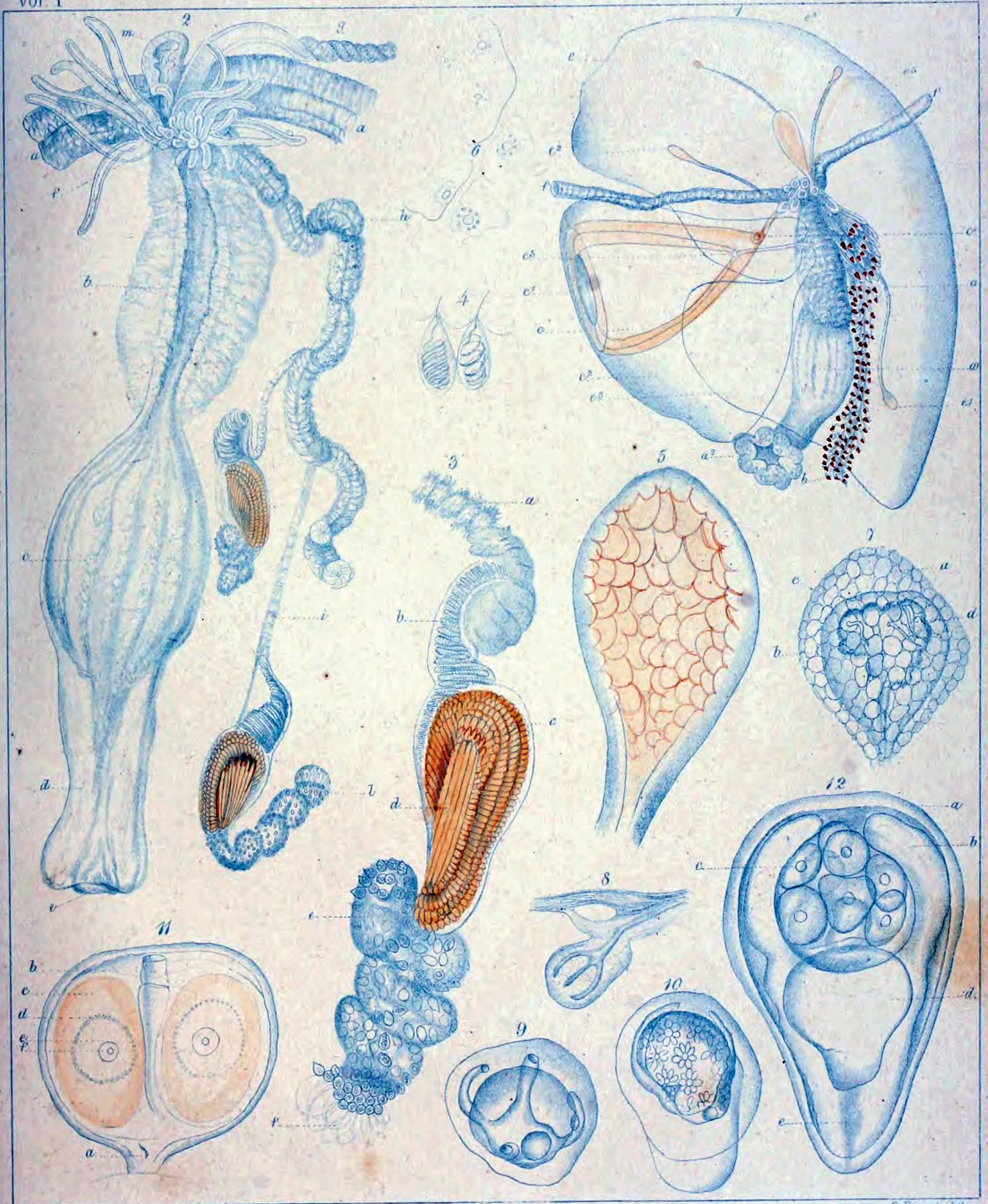


C. Vogt, del.

Ledoux, sculp.

Nugent, lith.

Praya diphyes. Blainville

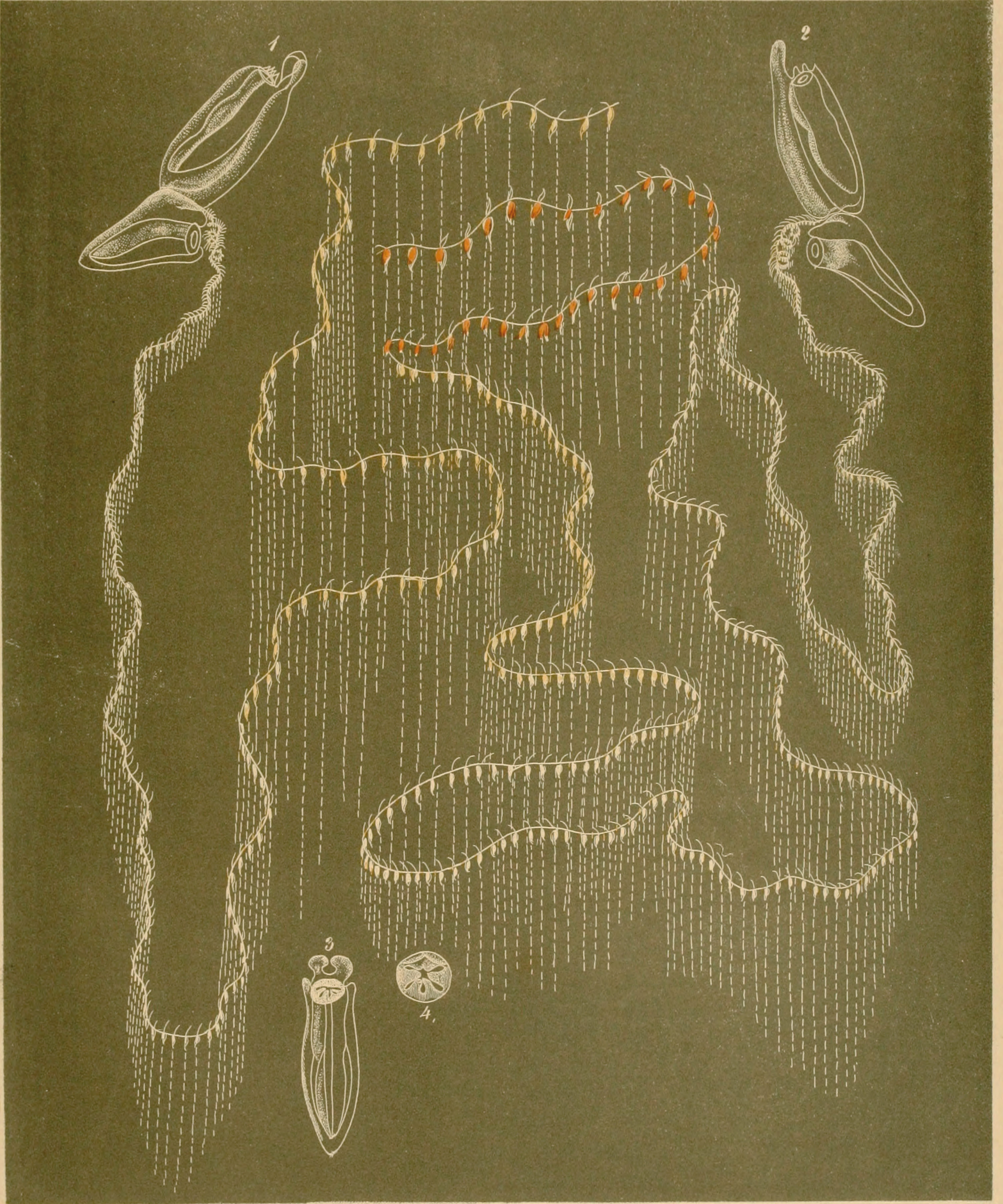


C. Vogt. del.

Ledoux imp.

G. Nager lith.

Praya Diphyes de Blainville.

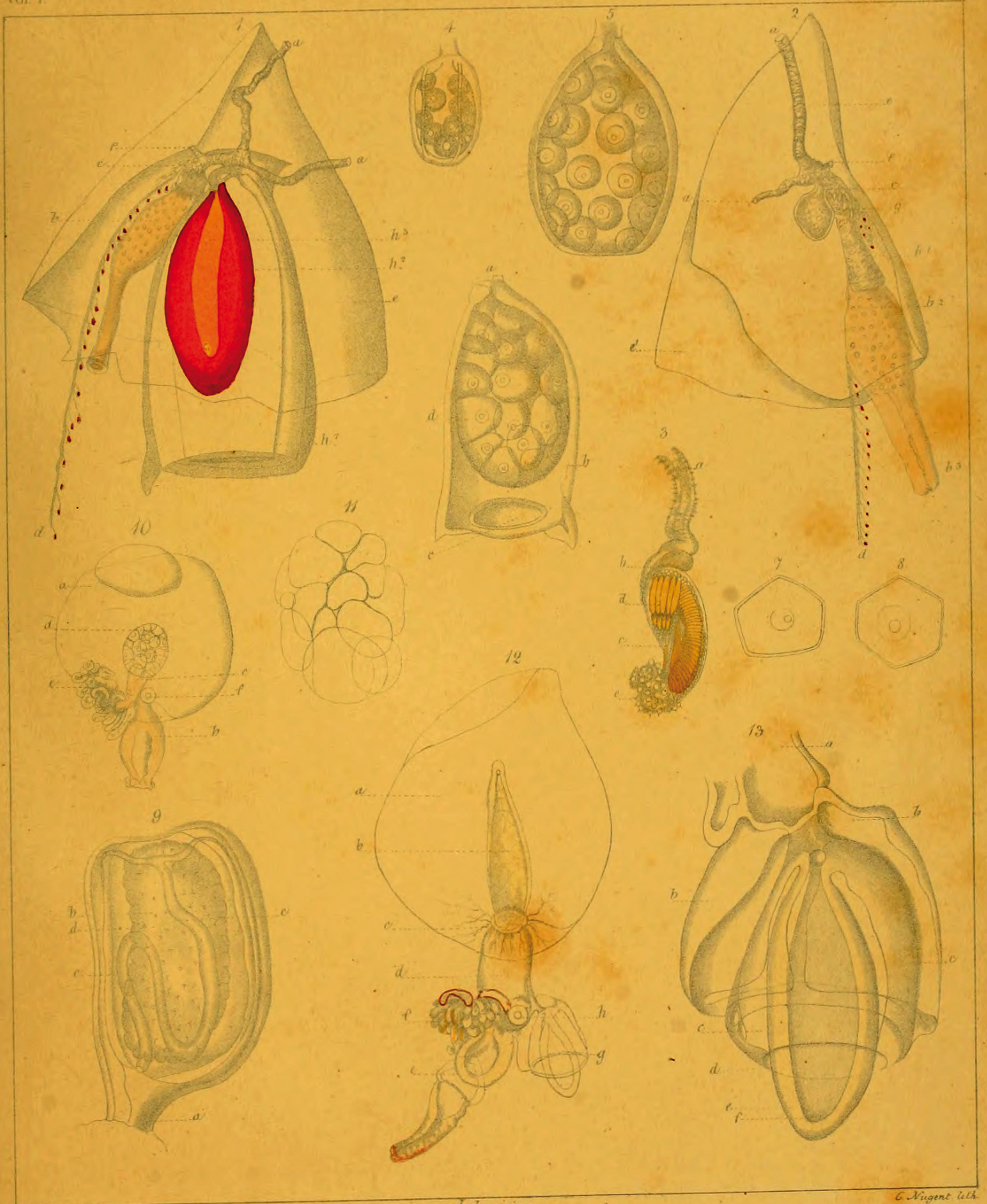


C. Voigt, del.

Leclercq imp.

Mugent lith.

Galeolaria aurantiaca. C. Voigt.

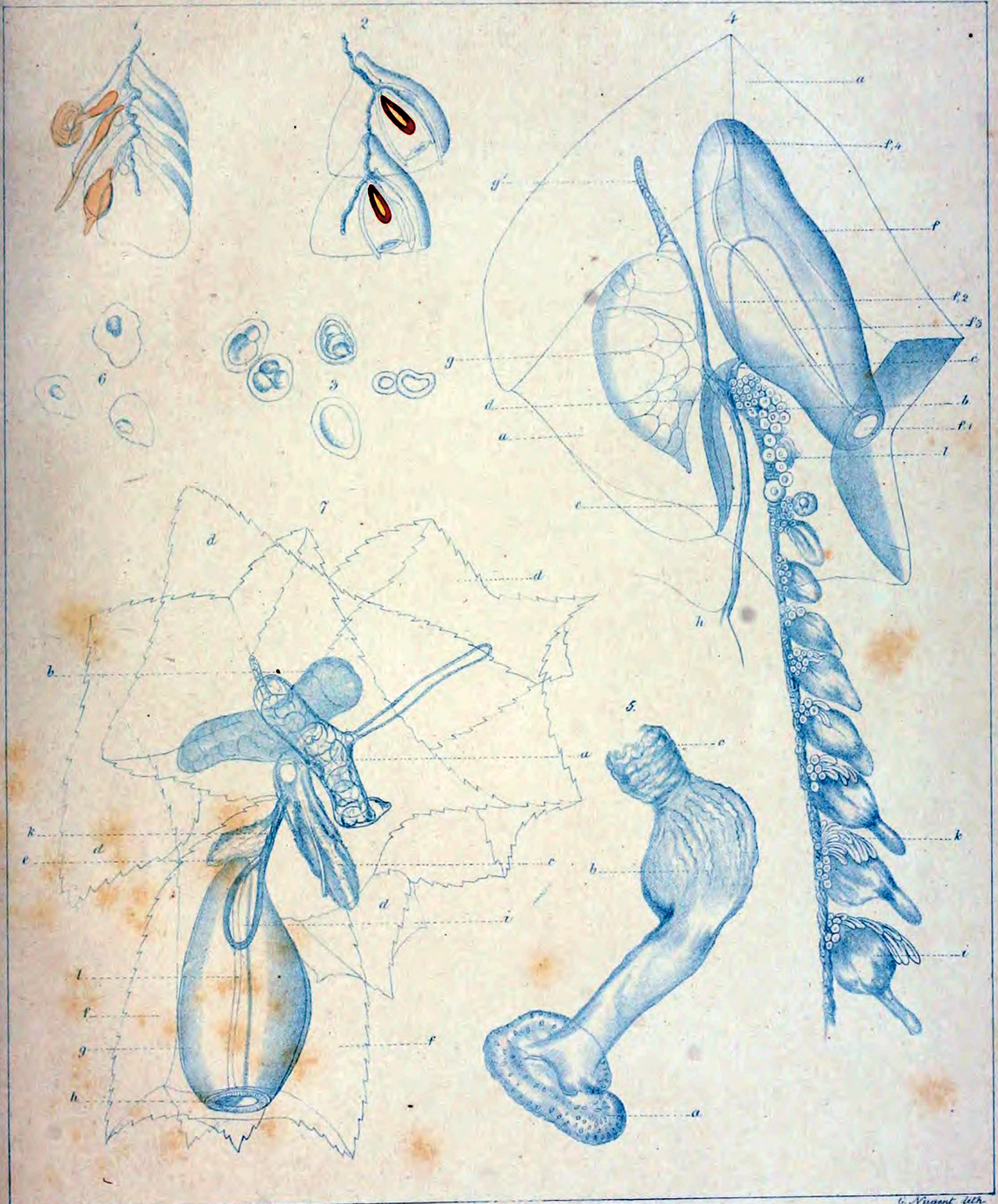


C. Vogt del.

Ledoux imp.

C. Nugent lith.

Galeolaria aurantiaca. C. Vogt.

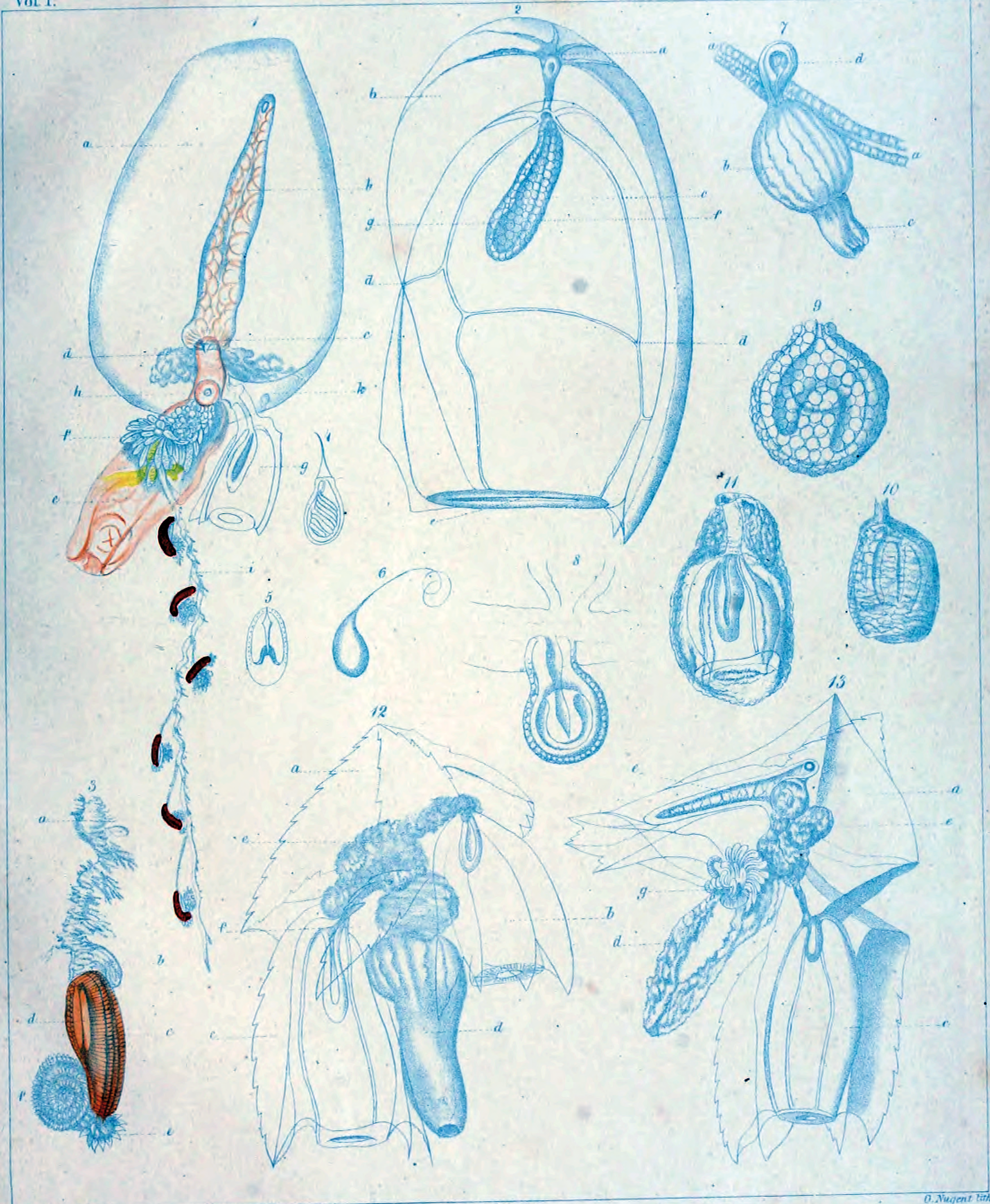


C. Vogt. del.

Ledoux. imp.

G. Nugent lith.

15.- Galeolaria aurantiaca.-C. Vogt.-1 7. Abyla trigona.- Q. et G.—



T. Vogt, del

Ledrus imp

O. Nugent lith

1.—2. Galeolaria aurantiaca. 3.—6, 10.—13. Abyla trigona. 7—9 Diphyes.